

# Cascade

Popular plan shown in two construction styles




Traditional Full Scribe Construction

(Featured Show Home at BC Place Home Show)

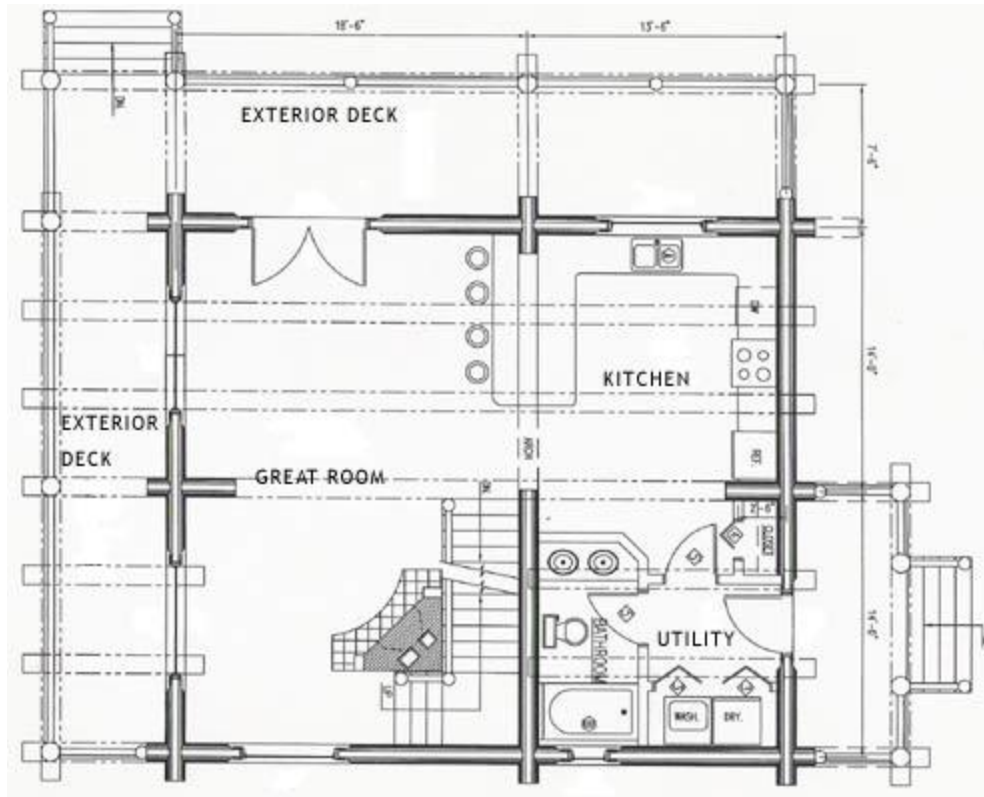



Post and Beam Construction

Front view above left, rear view above right

 <p><b>Cascade Handcrafted Log Homes</b></p>	<b>Design:</b>	Cascade	<b>Area:</b>	1,500 sq ft (139 m <sup>2</sup> )
	<b>Designed by:</b>	Cascade Handcrafted Log Homes	<b>Features:</b>	¾ loft, balcony under roof , flexible floor plan, 600 sq ft (57 sq m) of deck under roof
	<b>Log Home Construction Style:</b>	Traditional Full Scribe or Post and Beam		

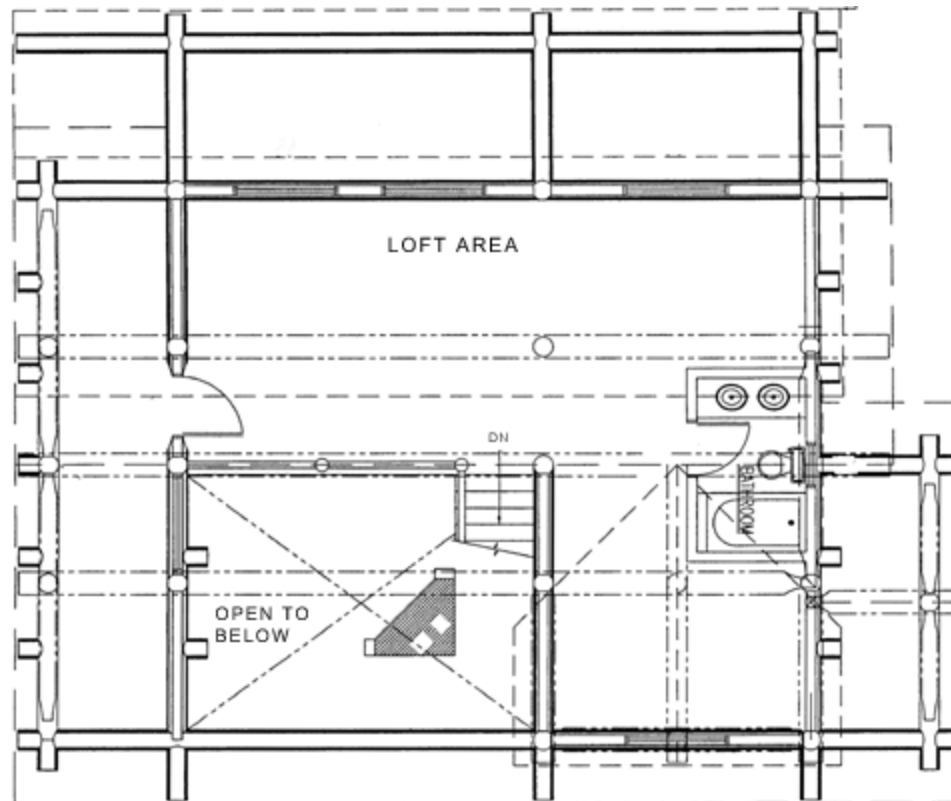
# Cascade: Plan of 1<sup>st</sup> Floor




 <p><b>Cascade Handcrafted Log Homes</b></p>	<b>Design:</b>	Cascade	<b>Area:</b>	1,500 sq ft (139 m <sup>2</sup> )
	<b>Designed by:</b>	Cascade Handcrafted Log Homes	<b>Features:</b>	¾ loft, balcony under roof , flexible floor plan, 600 sq ft (57 sq m) of deck under roof
	<b>Log Home Construction Style:</b>	Traditional Full Scribe or Post and Beam		

# Cascade: Plan of 2<sup>nd</sup> Floor

Loft area can be configured in to bedrooms to suit.



 <p><b>Cascade Handcrafted Log Homes</b></p>	<b>Design:</b>	Cascade	<b>Area:</b>	1,500 sq ft (139 m <sup>2</sup> )
	<b>Designed by:</b>	Cascade Handcrafted Log Homes	<b>Features:</b>	¾ loft, balcony under roof , flexible floor plan, 600 sq ft (57 sq m) of deck under roof
	<b>Log Home Construction Style:</b>	Traditional Full Scribe or Post and Beam		