


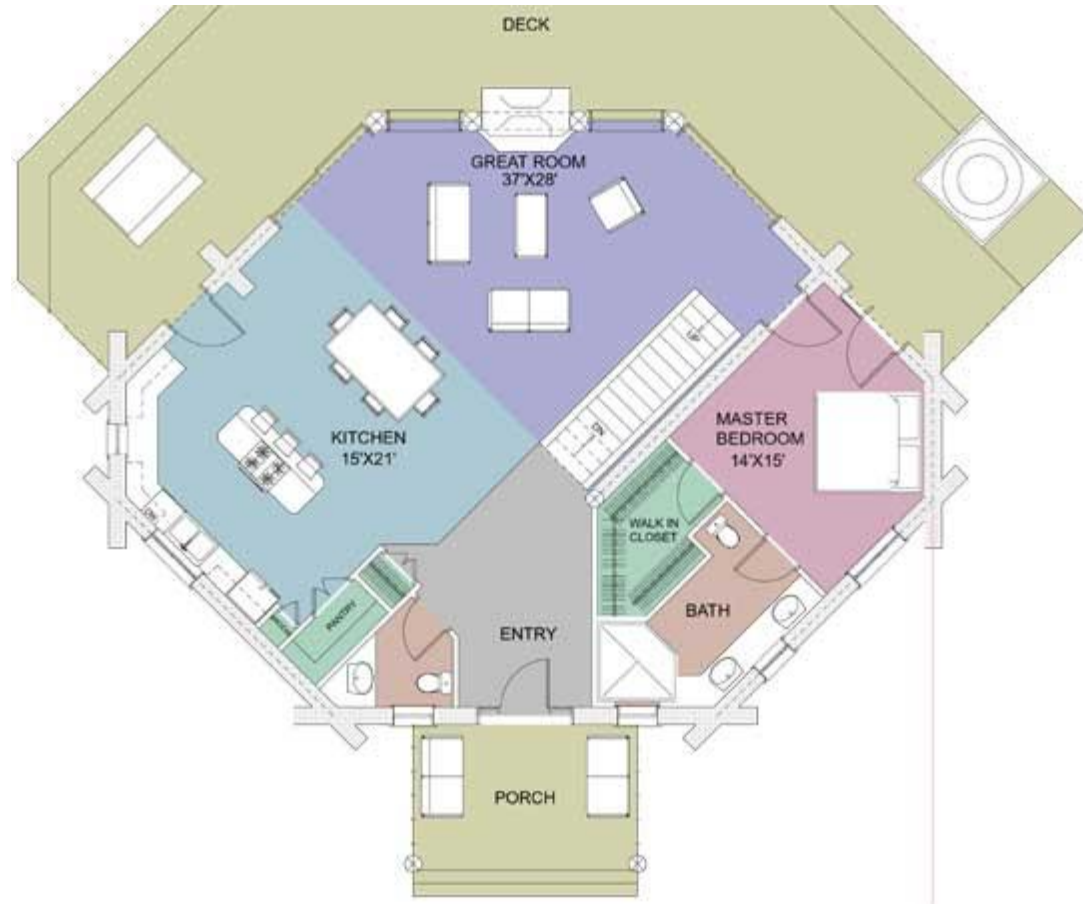
Hemlock: Perspective View


Winner, Log Home Living's 2007 Top Ten design award



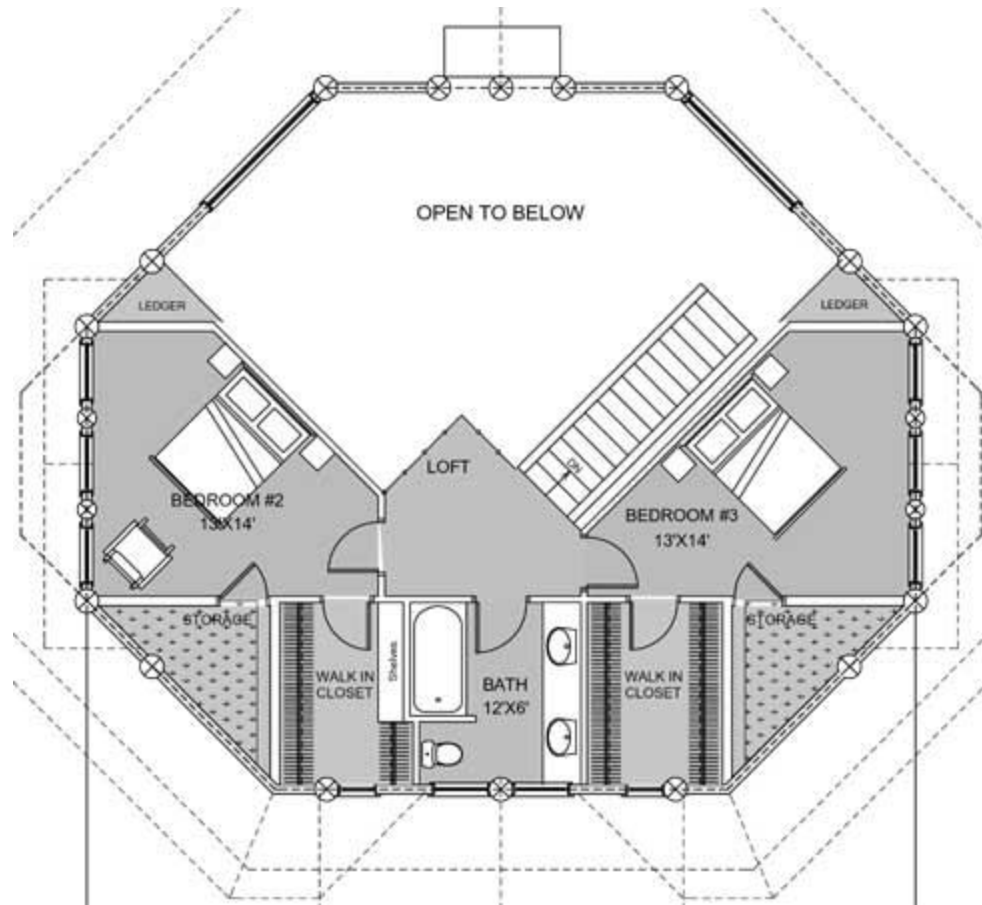
 <p>Cascade Handcrafted Log Homes</p>	Design:	Hemlock	Area:	2,304 sq ft (214 m ²)
	Designed by:	RCM CAD Design	Features:	Unique roof line makes for a beautiful efficient home. 3 bedrooms, 2 full bathrooms, one powder room. Large kitchen / dining area and a great hall complete the package
	Log Home Construction Style:	Traditional Full Scribe		


Hemlock: Plan of 1st Floor



 <p>Cascade Handcrafted Log Homes</p>	Design:	Hemlock	Area:	2,304 sq ft (214 m ²)
	Designed by:	RCM CAD Design	Features:	Unique roof line makes for a beautiful efficient home. 3 bedrooms, 2 full bathrooms, one powder room. Large kitchen / dining area and a great hall complete the package
	Log Home Construction Style:	Traditional Full Scribe		

Hemlock: Plan of 2nd Floor



 <p>Cascade Handcrafted Log Homes</p>	Design:	Hemlock	Area:	2,304 sq ft (214 m ²)
	Designed by:	RCM CAD Design	Features:	Unique roof line makes for a beautiful efficient home. 3 bedrooms, 2 full bathrooms, one powder room. Large kitchen / dining area and a great hall complete the package
	Log Home Construction Style:	Traditional Full Scribe		