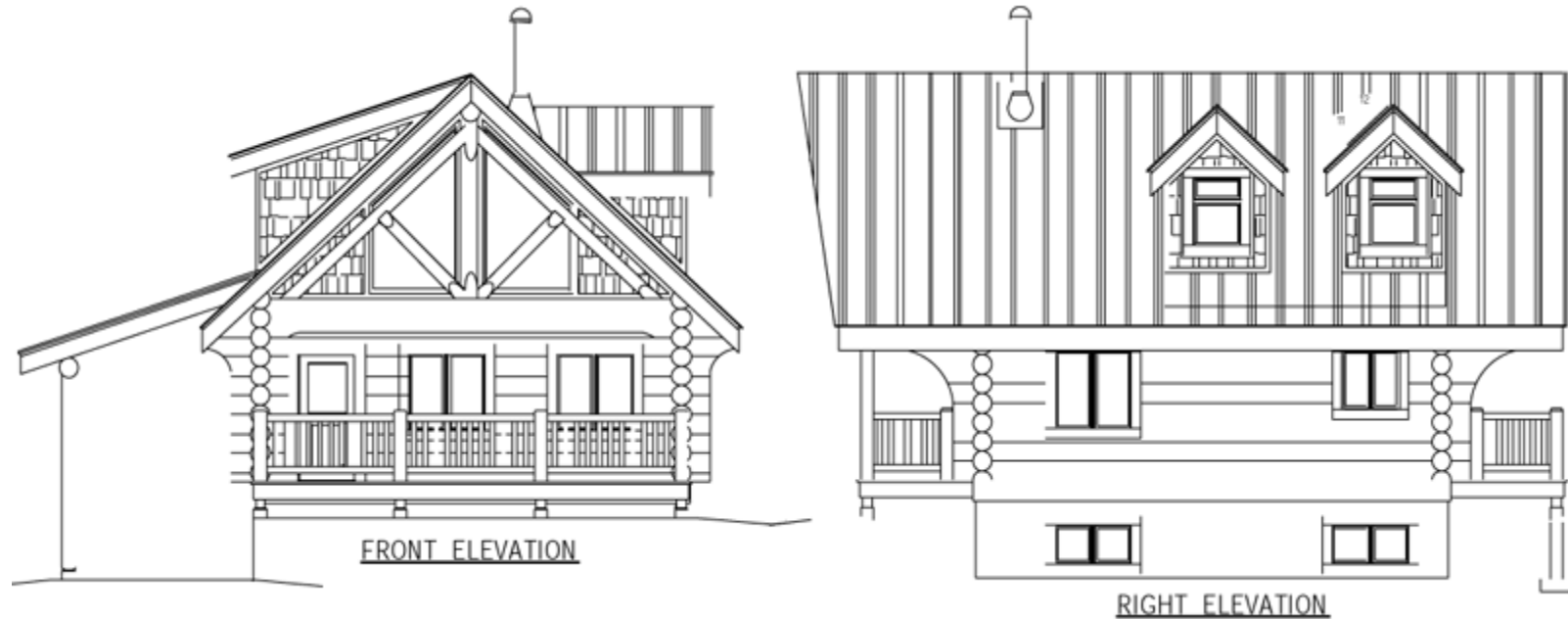

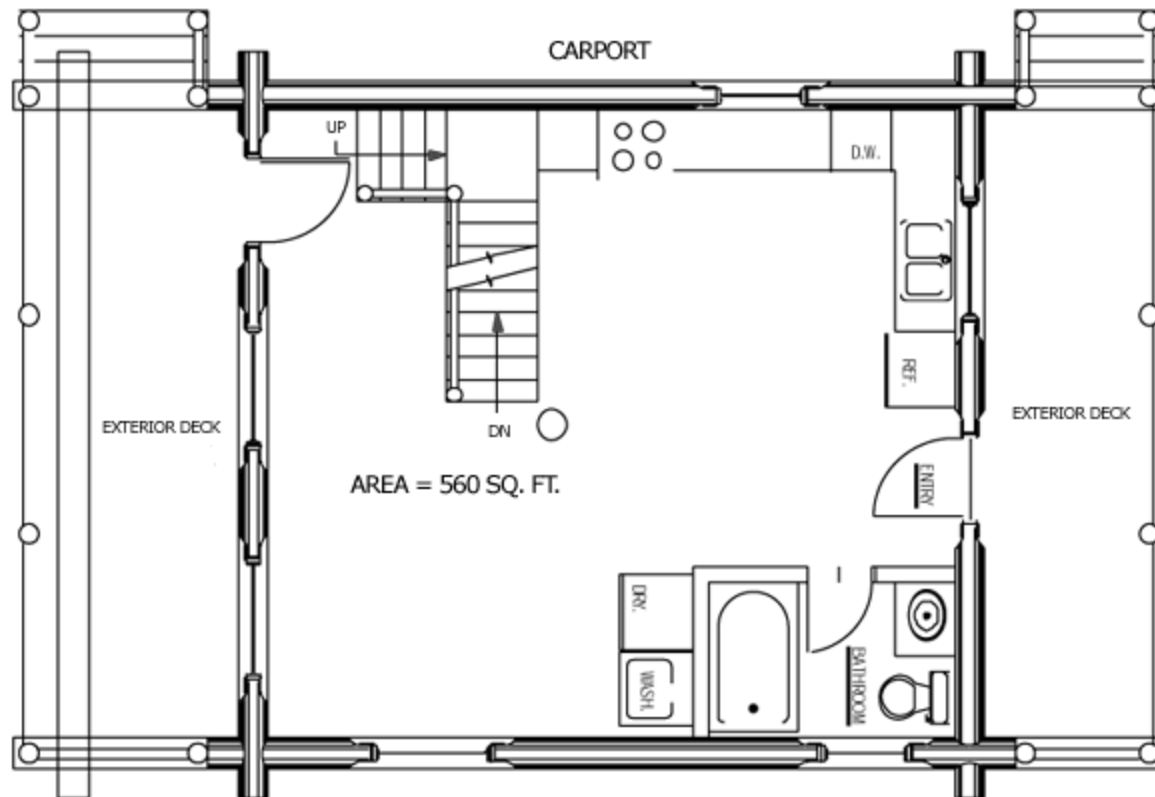



# Sunshine Valley



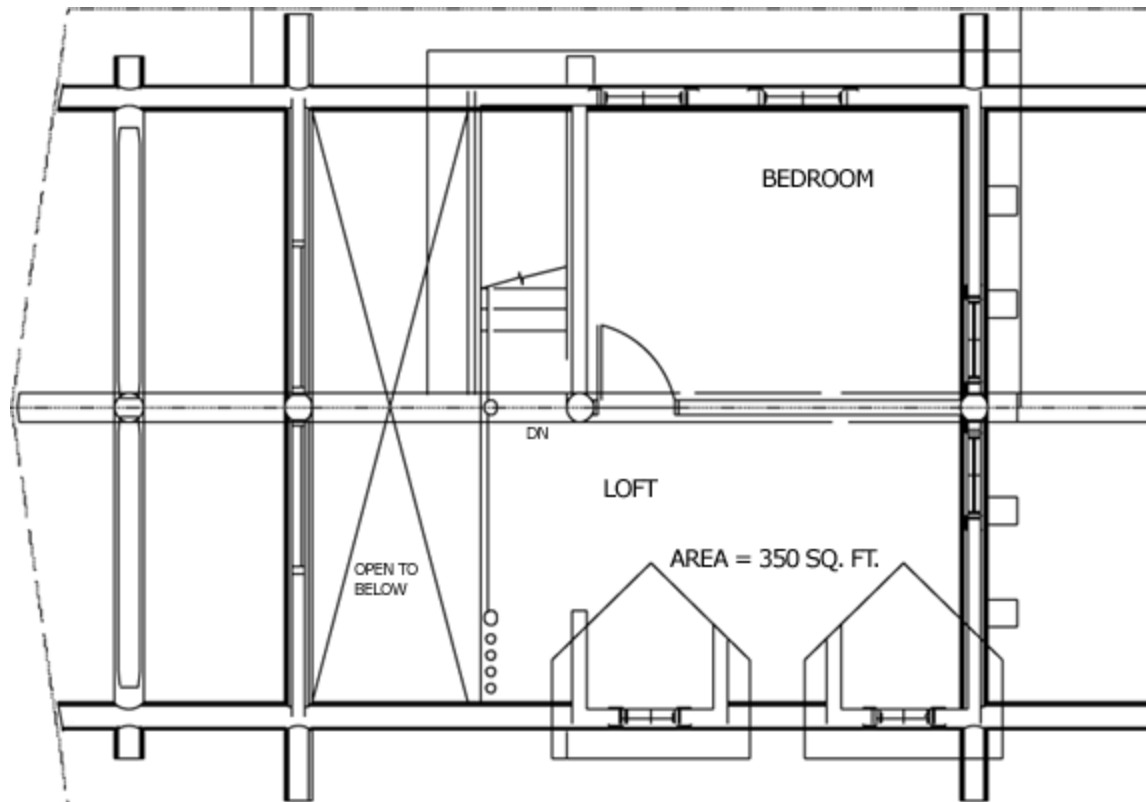
 <p><b>Cascade Handcrafted Log Homes</b></p>	<b>Design:</b>	Sunshine Valley	<b>Area:</b>	910 sq ft (84.5 m <sup>2</sup> )
	<b>Designed by:</b>	Leo Zagwyn North American Log Design	<b>Features:</b>	Small footprint with lots of function - including covered porch and carport
	<b>Log Home Construction Style:</b>	Traditional Full Scribe		


# Sunshine Valley: Plan of 1<sup>st</sup> Floor



 <p><b>Cascade Handcrafted Log Homes</b></p>	<b>Design:</b>	Sunshine Valley	<b>Area:</b>	910 sq ft (84.5 m <sup>2</sup> )
	<b>Designed by:</b>	Leo Zagwyn North American Log Design	<b>Features:</b>	Small footprint with lots of function - including covered porch and carport
	<b>Log Home Construction Style:</b>	Traditional Full Scribe		

# Design: Plan of 2<sup>nd</sup> Floor



 <p><b>Cascade Handcrafted Log Homes</b></p>	<b>Design:</b>	Sunshine Valley	<b>Area:</b>	910 sq ft (84.5 m <sup>2</sup> )
	<b>Designed by:</b>	Leo Zagwyn North American Log Design	<b>Features:</b>	Small footprint with lots of function - including covered porch and carport
	<b>Log Home Construction Style:</b>	Traditional Full Scribe		